

PROCEDURE FOR PREPARING 840C HARDDISK

PRE PREQUISITE:

1. MMC Interface Card 6FC5 112-0DA01-0AA0/1
2. Floppy Drive 840C 6FC5 135-0AA01-0AA0
3. HARDDISK (<=10GB) OR FLASHDISK (<=10GB)
4. BOOTABLE FLOPPY DISK (DR DOS FORMAT) WITH NECESSARY TOOLS (sys.com, fdisk.com, format.com, fx.exe etc)
5. PC with DOS / Win 95 / PC with <=2 GB hard disk & Bootable floppy & Floppy drive with Dos Access.
6. Parallel Cable for FX transfer.

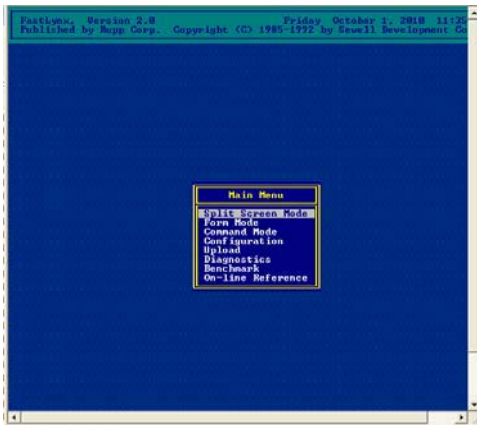
Parallel cable details.....

25 Pin Male		25 Pin Male
2	-----	15
3	-----	13
4	-----	12
5	-----	10
6	-----	11
10	-----	5
11	-----	6
12	-----	4
13	-----	3
15	-----	2
25	-----	25

FX Cable details / Ghost cable details

Procedure:

1. Install NEW HDD in MMC CPU.
2. Change Drive Boot Sequence its should be first **A: then it should be C: (A: , C:)**
3. Put bootable floppy with Tools (as mentioned in Point 4)
4. After booting it will ask for Time & Date press Enter it will stop on **A:**
5. Now type **Fdisk**
6. It will ask for creating Partitions pls. Select only one Partition for 600MB
7. Now come back with **ESC** key on key board.
8. Now type **Format C: /X**
9. Your "C drive is formatted", it will ask for Label you can enter any Label.
10. Now Type SYS C: then wait for few seconds you will see on Screen **System Transferred.**
11. Now you may switch ON system remove bootable floppy and switch ON.
12. You will see System boots from HDD and you will see it stops on C:
13. Insert floppy, **copy FX software from Floppy to System.** (Copy A:FX*.* C:)
14. Come to C: Enter FX on system
15. The you will see FX Screen as below



16. Now Boot your PC with Floppy with External Floppy. The it will run and show A:
17. Then type C: (Your C should have FX software)
18. Type FX You will see the same screen as shown above. Then it goes to Split screen as shown below.
19. Left you see your PC Right You will see System Directories
20. Now Select the file with F5 (MARK) then press F3 (COPY).
21. For selecting complete files at once you can put curser on "***** " as shown below. Or **ALT + T** you can select Individual file.

```

P:\>...D:\DOWNLOAD\TOOLS\FX  SPLIT SCREEN MODE
565448704 bytes free          not connected

*
all files in directory
<DIR> move up directory
Thumbs.db 8192 11-14-97 6:24p
Fx 356305 4-12-01 3:14a
Fx cmd 3838 3-20-98 4:32a
Fx exe 111298 2-23-93 1:17a
Fx hlp 20086 2-23-93 1:17a
Fx ico 766 2-23-93 1:17a
Fx pif 995 12-17-93 4:48a
Fxlcd ico 766 2-23-93 1:17a
Fxlink exe 44611 12-29-96 10:03p
Fxsur exe 44620 2-23-93 1:17a
Fxsur pif 967 2-03-00 10:22p
guide fx 53694 2-23-93 1:17a
nc exe 9739 7-24-98 3:45a
nc ini 434 8-23-99 9:03p

```

Remote System Not Connected

Please insure:

- 1) Cable securely connected
- 2) "Fx" running on remote

Press Alt-U to upload FastLynx to the remote system.

Technical support: <02>224-0897

Port List : COM1, LPT1
Baud Rate : 115200
Serial : COM1
Parallel : LPT1

Then you will see your data getting transferred.
PC sending will show SENDING XXXX.XXX files

SYSTEM Receiving will show Receiving XXXX.XXX files...

Once Completed it will show Data Transfer Completed.

Now Switch OFF & Switch ON System it will Boot Normally with 840C Screen General Reset Mode.

Then you can follow the General Reset Procedure.